



Brugge

College of Europe
Collège d'Europe



Natolin

POSTGRADUATE INSTITUTE OF EUROPEAN STUDIES

OUR HISTORY

1948

The Hague Congress: Salvador de Madariaga, Winston Churchill, Paul Henri Spaak and Alcide de Gasperi, among others, decide to found the College of Europe

1949

College of Europe in Bruges, Belgium

1992

College of Europe in Natolin (Warsaw), Poland



**1-YEAR
PROGRAMMES**

**ADVANCED
MASTERS**

**66
ECTS**

**ENGLISH
FRENCH**



ACADEMIC PROGRAMMES

NATOLIN CAMPUS

MA in European Interdisciplinary Studies

- EU Public Affairs and Policies
- The EU and the World
- The EU and its Complex Neighbourhoods
- European History and Civilisation

BRUGES CAMPUS

MA in European Political and Governance Studies

MA in EU International Relations and Diplomacy Studies

MSc in European Economic Studies

LLM in European Law

2-YEAR
PROGRAMME

120
ECTS

ENGLISH



MASTER OF ARTS IN TRANSATLANTIC AFFAIRS

This joint Master of Arts in cooperation with **The Fletcher School of Law and Diplomacy at Tufts University, Boston**, prepares graduates for positions of transatlantic leadership

- Includes a high-level **internship**
- Available in **Natolin** and **Bruges**

FIRST SEMESTER

TWO STUDY TRACKS

Students can choose between two tracks:
the **Interdisciplinary track** and the **Pluridisciplinary track**

STUDY PROGRAMME

- EU Law and Governance
- European Economic Integration
- Geopolitics and International Security
- Regional Studies
- Governance of Energy Transition and Climate Action
- Media, Technology and Politics
- History, Societies and Identities
- Intercultural Communication



SECOND SEMESTER

SPECIALISATIONS

Students choose one among the **four** available specialisations:

- **EU Public Affairs and Policies**
- **The EU and the World**
- **The EU and its Complex Neighbourhoods**
- **European History and Civilization**

STUDY PROGRAMME

- **70+ courses** to choose from
- Cooperation with external partners





FACULTY, TEACHING METHODOLOGIES AND RESOURCES

FLYING FACULTY

100+ professors and practitioners coming from over **25 countries**

ON-SITE CLASSES

Lectures, workshops, seminars, masterclasses and **simulation games**

Individual guidance with the **Master's thesis** (12 000 – 18 000 words) and research methodology

BLENDED LEARNING

E-learning platforms, wide range of online courses and events

NATOLIN LIBRARY

45 000+ books

Access to **EBSCO** and **ProQuest** platforms with over 180 000 books and several hundreds of thousands of journals

STUDY TRIPS

Two one-week-long study trips, one per each academic semester

The study trips are an integral part of the EIS curriculum, and provide students with a **full immersion** in topical issues on-site with key experts and decision makers

#NATOLINONTOUR







FIRST-CLASS ACADEMIC ENVIRONMENT

ACADEMIC CHAIRS

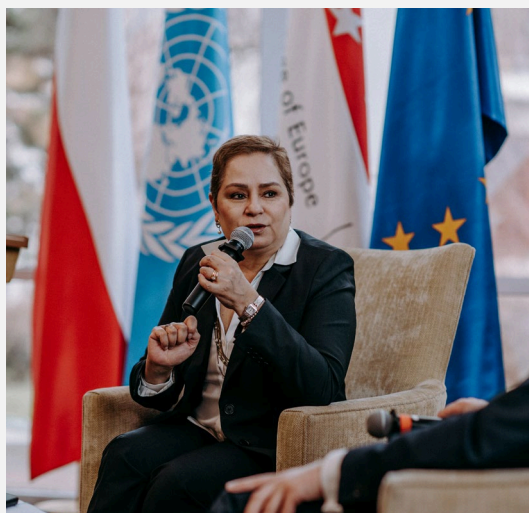
- **European Civilization Chair**
- **European Neighbourhood Policy Chair**

EVENTS

- High-level visits
- International conferences
- Debates

NATOLIN NESTS

- Energy and Climate
- Migration and Human Rights
- Media and Disinformation
- Digital and Security



LANGUAGES & INTERCULTURAL DIALOGUE

LANGUAGE COURSES

8 languages: Arabic, English, French, German, Italian, Polish, Russian and Spanish

SUMMER LANGUAGE ACADEMY

3 weeks of intensive courses in French and English
+ French e-learning course (A1-A2)

LANGUAGE CERTIFICATES

Official language certificates in all the languages
taught at the campus



CAREERS & PROFESSIONAL DEVELOPMENT



ONE-TO-ONE CAREER TUTORIALS

Students get **individual guidance** from career specialists on how to plan their careers, prepare for job interviews and write CVs and motivation letters

PROFESSIONAL SKILLS WORKSHOPS

A variety of workshops available seeking to help students develop all sorts of professional skills, e.g. **debates, EPSO competitions training**

NETWORKING EVENTS

Students widen their professional network during **Alumni Reunions** and meet a large range of representatives of the public and private sectors ("**Meet the Professionals**")

OUR ALUMNI

The College of Europe has a community of more than **15 000 alumni**

Our graduates join a **global network** of young leaders, featuring personalities who have reached senior positions in the public and private sectors.



**MARGARITIS
SCHINAS**

Vice-President of the European
Commission
Christopher Columbus Promotion
(1985-1986)



MARIJA PEJČINOVIĆ BURIĆ

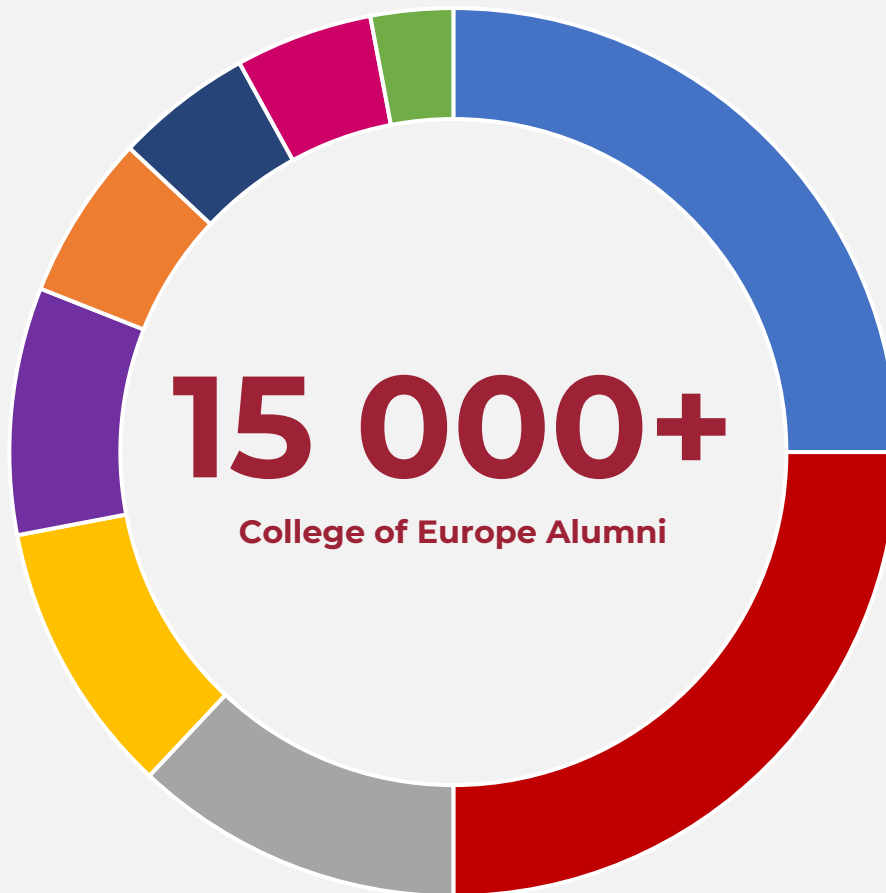
Secretary General of the
Council of Europe
Stefan Zweig Promotion
(1993-1994)



RAFAŁ TRZASKOWSKI

Mayor of Warsaw
Alexis de Tocqueville Promotion
(1996-1997)





EMPLOYMENT SECTORS

- 25% | Companies, consultancies, and trade associations
- 25% | EU institutions and EU agencies
- 12% | Academic institutions, think tanks, and research institutions
- 10% | Public sector (national, regional and sub-national)
- 8% | Law firms
- 6% | International organisations
- 5% | NGOs, trade unions, and professional associations
- 5% | Embassies and diplomatic service
- 4% | Other organisations





THE NATOLIN CAMPUS IN WARSAW

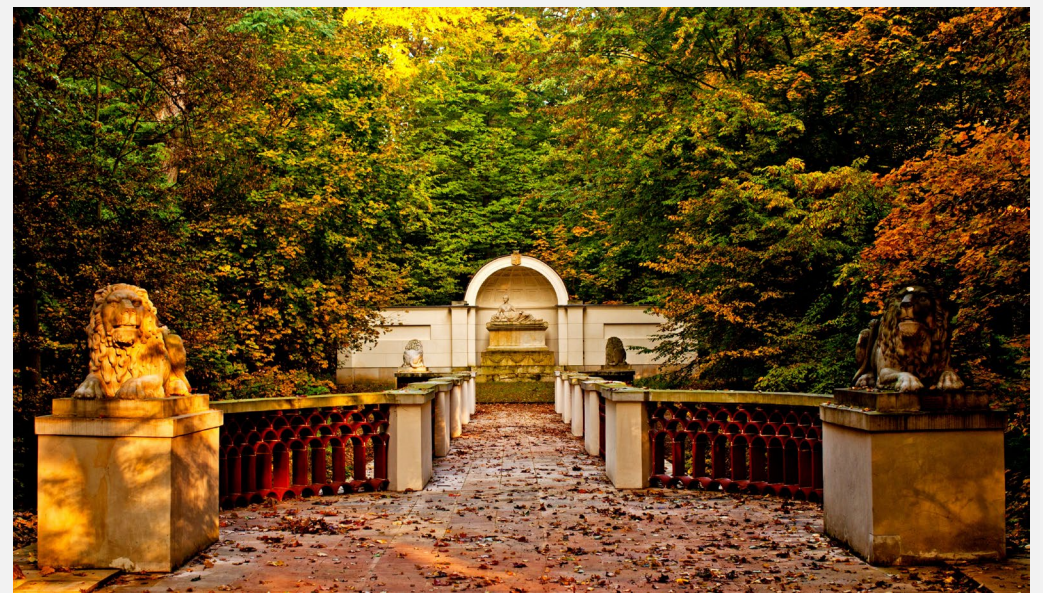
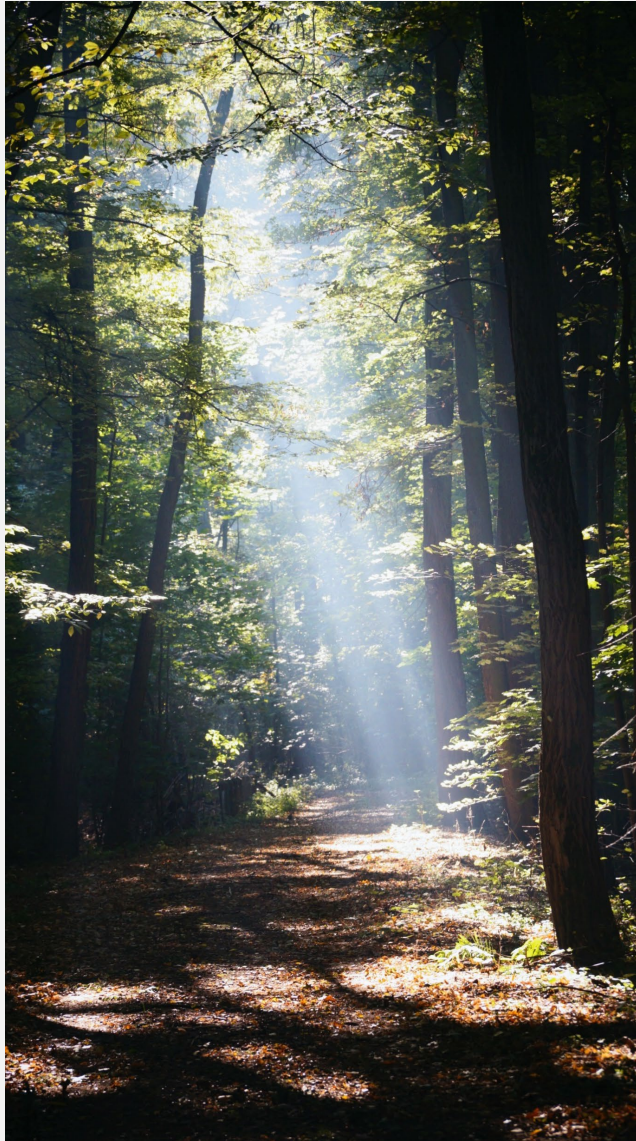
THE CAMPUS

- A historic, picturesque **120-hectare nature reserve**
- Situated not far from the city centre

THE CITY

- Capital of Poland since 1596
- UNESCO World Heritage site
- FRONTEX headquarters and OSCE's Office for Democratic Institutions and Human Rights
- Business and research hub in the very centre of Europe





THE BRUGES CAMPUS

THE CAMPUS

- Two campus sites, **Dijver and Verversdijk**
- Seven residence halls in the city centre of Bruges

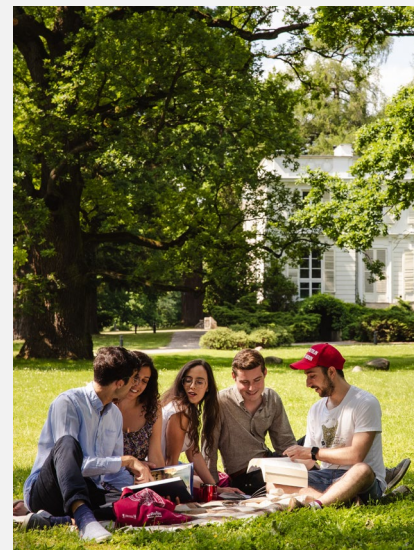
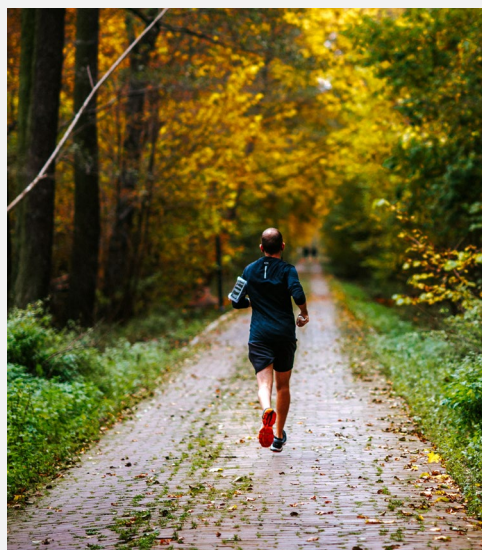
THE CITY

- Medieval city situated in the North of Belgium, in Flanders
- UNESCO World Heritage site
- Hosts also the United Nations University Institute on Comparative Regional Integration Studies (UNU-CRIS)
- Former European Capital of Culture

STUDENT LIFE

- Multicultural community of more than **130 students in Natolin** and **340 students in Bruges**, from around **50 countries**
- Rich offer of **extracurricular and cultural activities** (**National Days, Natolin Choir**)
- High standards of accommodation
- Student restaurant
- Indoor and outdoor sports facilities in Natolin





SCHOLARSHIPS

More than **70%** of our students are awarded full or partial scholarships by their national governments, private actors or by the College of Europe itself thanks to the support of European Institutions



GOVERNMENTAL & PRIVATE SECTOR SCHOLARSHIPS

Many of our students are granted partial or full scholarships. The list on the right represents countries and regions as well as public or private institutions granting scholarships

For more information visit:

coeurope.eu/scholarships

- Andorra
- Austria
- Belgium (*Government of Flanders for candidates from Eastern Partnership countries*)
- China (*China Scholarship Council*)
- Cyprus
- Czech Republic
- Denmark
- France
- Germany (*Government, Land Thuringia, Land North Rhine-Westphalia and Land Baden-Württemberg*)
- Hungary
- Ireland
- Italy
- Luxembourg
- Malta
- Monaco
- North Macedonia
- Norway
- Poland (*for Polish citizens, Ukrainian citizens, and citizens of the Western Balkans*)
- Portugal (*Government and Azores Islands*)
- Slovenia
- Spain (*Government, Regions of Biscay, Catalonia, Murcia and Valencia, Canary Islands, Fundación Ramón Areces*)
- Sweden
- Switzerland
- The Netherlands
- Turkey (*Government / private sector and Jean Monnet Scholarship Programme*)
- United Kingdom (*British and Scottish Governments, Brunat Scholarships*)

SCHOLARSHIPS BY THE COLLEGE OF EUROPE



ENP SCHOLARSHIPS (EU CITIZENS)

- Full or partial
- Interest in the ENP
- Additional motivation letter needed
- Attribution based on motivation and merit

ENP SCHOLARSHIPS (ENP COUNTRIES CITIZENS)

- Full
- Attribution based on motivation and merit

NATOLIN ONLY:

HISTORY SCHOLARSHIPS (ALL NATIONALITIES)

- Full or partial
- Graduates in history and related disciplines
- Additional motivation letter needed
- Attribution based on motivation and merit

JOURNALISM SCHOLARSHIPS (ALL NATIONALITIES)

- Full or partial
- Journalists, representatives of communication and media centres, freelancers, or have a clear background and interest in media and journalism
- Attribution based on motivation and merit



Funded by
the European Union

SCHOLARSHIPS FUNDED BY THE EU4YOUTH PROGRAMME

The College of Europe in Natolin is offering additional full scholarships for the postgraduate European Interdisciplinary Studies programme in 2023/24 to students coming from the Eastern Partnership countries. The scholarships cover tuition fee, full board and lodging on campus. They are funded under the **“EU4Youth phase III Youth Employment and Entrepreneurship”** programme, which receives funding from the EU and is co-financed by the Ministry of Foreign Affairs of Lithuania.



College of Europe
Collège d'Europe



MINISTRY
OF FOREIGN AFFAIRS
REPUBLIC OF LITHUANIA



VIEŠOJI ĮSTAIGA
CENTRINĖ PROJEKTŲ VALDYMO AGENTŪRA

FEES AT THE COLLEGE OF EUROPE

**The total fee for the academic year 2023-2024 is
€ 27 000 and covers both tuition and board & lodging**

AT NATOLIN, TUITION COVERS:

- Tuition, registration, examinations
- Two study trips (fully covered)
- Summer Language Academy (English/French)
- Language proficiency certificates
- Introductory courses before the start of the academic year

AT NATOLIN, BOARD AND LODGING COVER:

- Accommodation: en-suite private room and cleaning service (either on campus or in a villa/apartment adjacent to the campus)
- Meals: breakfast, lunch, dinner (including Sundays and public holidays)
- Medical care: students are provided by the College with access to basic ambulatory services off-campus. For more serious cases (hospitalisation), private insurance or European Health Insurance Card (for EU citizens) are needed.
- Wi-Fi connection on the campus and all its facilities
- Sports facilities





ADMISSIONS TO THE COLLEGE OF EUROPE FOR 2023/2024

—
DEADLINE: 18 JANUARY 2023

#THEWIDERPERSPECTIVE



@coenatolin



Co-funded by
the European Union



ACADEMIC REQUIREMENTS AT THE COLLEGE OF EUROPE

RELEVANT UNIVERSITY DEGREE

Bologna Master's degree or equivalent (240 ECTS) in a relevant discipline (in exceptional cases Bachelor's degree only)

LANGUAGE PROFICIENCY

English level minimum B2 and French level minimum A2/B1

Natolin: Summer Language Academy available

AREAS OF INTEREST

European Affairs, European Integration, Geopolitics, International Relations, Foreign Policy, Security Studies, Energy Studies



STUDENT PROFILES

ACADEMIC BACKGROUND

Law, economics, political or social sciences, history, philosophy, geography, linguistics, journalism but also natural sciences and engineering!

PROFESSIONAL EXPERIENCE

Fresh graduates & young professionals

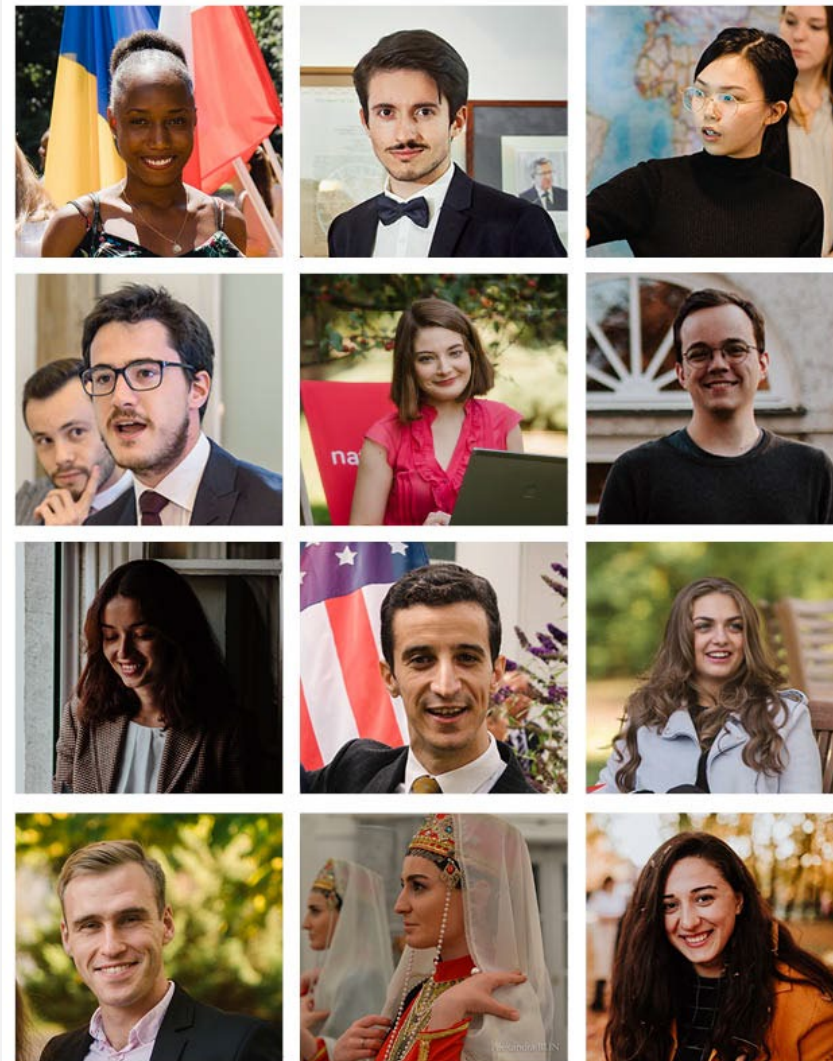
LANGUAGES

Speaking two or more languages

AVERAGE AGE

25 years old

All interested in approaching the process of European integration from a broad and interdisciplinary perspective!



HOW TO JOIN THE COLLEGE OF EUROPE?

**APPLICATIONS OPEN
13 OCTOBER 2022 – 18 JANUARY 2023**

1. ONLINE APPLICATION AT [ADMISSIONS.COLEUROPE.EU](https://admissions.coleurope.eu)

- Choice of up to two study programmes
- Online application: CV, motivation letter, scholarship application, diplomas and transcripts, two recommendation letters, language proficiency certificates
- No application fee

2. PRE-SELECTION AND INTERVIEWS – SPRING 2023

- Interviews for pre-selected candidates with Selection Committees (National or College of Europe)

3. DECISIONS

- Admissions decisions: May - June 2023
- Scholarship decisions: May - July 2023





College of Europe
Collège d'Europe



Natolin

Widen your perspective!

[COLEUROPE.EU/NATOLIN](https://coleurope.eu/natolin)
CONTACTNATOLIN@COLEUROPE.EU



Co-funded by
the European Union

Funded by the European Union. Views and opinions expressed are however those of the author(s) only and do not necessarily reflect those of the European Union or the European Education and Culture Executive Agency (EACEA). Neither the European Union nor EACEA can be held responsible for them.